

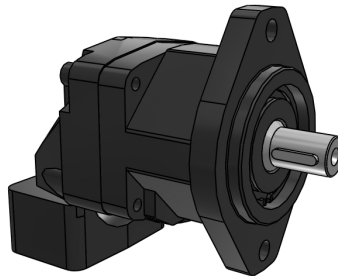


ENGINEERING YOUR SUCCESS.

Pump & Motor Division Europe
Parker Hannifin Mfg. Germany GmbH & Co. KG
Neefestrasse 96
09116 Chemnitz, Germany
Ph: +49 (0)371 393 70
www.parker.com/PMDE

Pump & Motor Division Europe F11/F12/F10

F12-030-MS-TV-T-000-0000-PT



*Interactive 3D graphic, click to activate and rotate
(3D capable PDF viewer required)*

| Technical Data | |
|-----------------|--|
| Part No. | F12-030-MS-TV-T-000-0000-PT |
| Series | F11/F12/F10 |
| Size | F12 |
| Displacement | 030 - 30.0 cc / 1.83 cu.in. |
| Function | M - Motor |
| Main Ports | S - ISO 6162-2 |
| Mounting Flange | T - SAE 2 Flange |
| Shaft Seal | V - FPM, High Pressure, High Temperature |
| Shaft | T - ISO 3019-1 (SAEJ744) |
| Version Number | 000 - Standard |
| Option 1 | 0000 - Standard |
| Pressure | |
| Option 2 | PT - Painted black and prepared for speed sensor |
| Weight [kg] | 11.5 |

[S] Main Port B:
ISO 6162-2 P19, 3/8-16 x depth 22mm

[S] Main Port A:
ISO 6162-2 P19, 3/8-16 x depth 22mm

[S] Drain Port C:
ISO 11926-1 - 7/8-14 (SAE J1926-1)

[T] Flange SAE:
ISO 3019-1 - 101-2 (SAE J744 - 101-2 (SAE B))

[T] Shaft:
ISO 3019-1 - 25-1 (SAE J744 - 25-1 (SAE B-B))

[S] Drain Port D:
ISO 11926-1 - 3/4-16 (SAE J1926-1)

For performance data, dimensions and deviations from standards, see catalog.

Disclaimer:

Parker PMDE has a continuous policy of product development and although the Company reserves the right to change specifications, it attempts to keep customers informed of any alterations. This publication is for general information only and customers are requested to contact their local Parker dealer for detailed information and advice on a products suitability for specific applications. All products are sold subject to the company's Standard conditions of sale.

F12-030-MS-TV-T-000-0000-PT



Price: contact Parker