

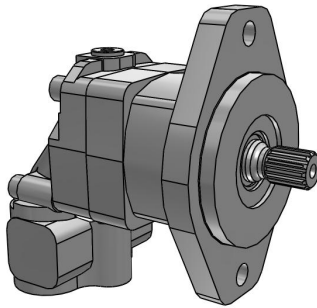


ENGINEERING YOUR SUCCESS.

Hydraulic Pump & Motor Division Europe  
Parker Hannifin Mfg. Sweden AB  
Flygmotorvägen 2  
461 38 Trollhättan, Sverige  
Ph: +46520 40 46 00  
www.parker.com/MSGE

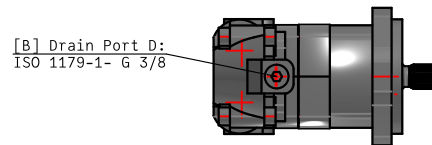
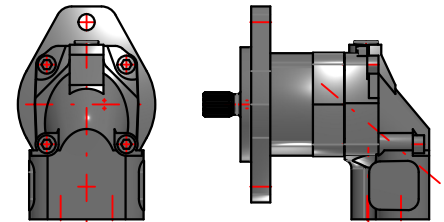
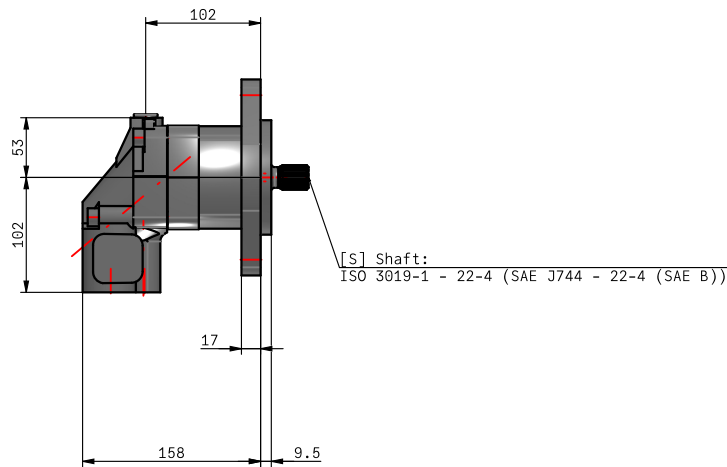
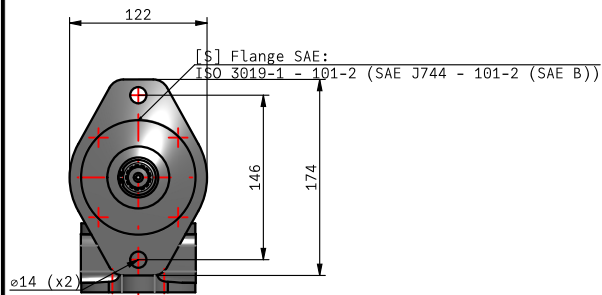
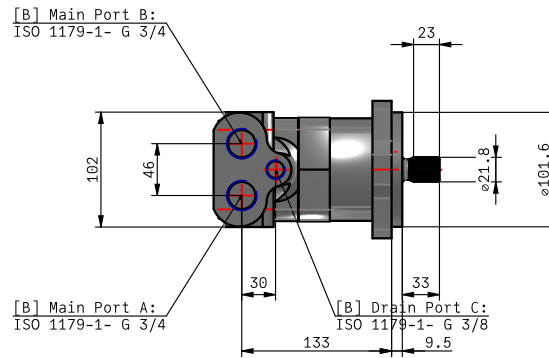
## Pump & Motor Division Europe F11/F12/F10

F11-012-RB-SV-S-000-0000-00



*Interactive 3D graphic, click to activate and rotate  
(3D capable PDF viewer required)*

Technical Data	
Part No.	F11-012-RB-SV-S-000-0000-00
Series	F11/F12/F10
Size	F11
Displacement	012 - 12.5 cc / 0.76 cu.in.
Function	R - Pump, Clockwise Rotation
Main Ports	B - ISO 1179-1
Mounting Flange	S - SAE 2 Flange
Shaft Seal	V - FPM, High Pressure, High Temperature
Shaft	S - ISO 3019-1 (SAE J744)
Version Number	000 - Standard
Option 1	0000 - Standard
Pressure	
Option 2	00 - Standard
Weight [kg]	7.5



For performance data, dimensions and deviations from standards, see catalog.

**Disclaimer:**

Parker PMDE has a continuous policy of product development and although the Company reserves the right to change specifications, it attempts to keep customers informed of any alterations. This publication is for general information only and customers are requested to contact their local Parker dealer for detailed information and advice on a products suitability for specific applications. All products are sold subject to the company's Standard conditions of sale.

F11-012-RB-SV-S-000-0000-00



Price: contact Parker